

File: City Corporation

CIVIL ACTION NO: 83-CI-

BULLITT CIRCUIT COURT

PETITION TO INCORPORATE A CITY

IN RE: CITY OF HEBRON ESTATES
BULLITT COUNTY, KENTUCKY

The undersigned petitioners, in person and by counsel, desire to incorporate the City of Hebron Estates in Bullitt County, Kentucky, petition the Court as follows:

1. The boundaries of the proposed city are as follows:

Beginning at a point in the east line of Ky. Hwy. 61 (Preston Hwy.) and the southwest corner of Losch Division; thence with south line of Losch Division S. 87 deg. 01' E.; 1208.4 ft. to a point at the corner of Burkland Gardens Subdivision; thence with north line of said subdivision S. 87 deg. 44' E.; 3112.5 ft. to a point; thence S. 88 deg. 09' E.; 576.5 ft. to a point; thence N. 52 deg. 25' E.; 76.5 ft. to a point on west side of Cedar Creek; thence S. 72 deg. 1' E.; 247.5 ft.; thence S. 33 deg. 02' E.; 82.9 ft. to a point; thence S. 18 deg. 25' W.; 125.1 ft. to a point; thence S. 58 deg. 54' W.; 214.6 ft. to a point; thence S. 36 deg. 28' W.; 263.7 ft. thence S. 0 deg. 29' E.; 128.5 ft. to a point; thence S. 38 deg. 04' E. to a point; thence S. 67 deg. 38' E.; 501.5 ft. to a point; thence S. 64 deg. 09' E.; 126.2 ft. to a point; thence S. 52 deg. 27' E.; 29.0 ft. to a point in west line of Bailey; thence with his west line S. 26 deg. 58' W.; 337.9 ft. to a point; thence S. 84 deg. 23' W.; 64.7 ft. to a point; thence S. 18 deg. 44' W.; 471.1 ft. to a point in north line of Girl Scout Camp Property; thence with their north line S. 88 deg. 40' W.; 325.6 ft. to a point at the northwest corner of Girl Scout Camp property; thence with their west line S. 3 deg. 21' W.; 738.4 ft. to a point; thence S. 30 deg. 22' E.; 190.6 ft. to a point at the corner of Sharps; thence with their east line S. 54 deg. 35' W.; 130.2 ft. to a point; thence S. 2 deg. 13' W.; 350.3 ft. to a point at southeast corner of Sharp. thence with their south line S. 85 deg. 30' W.; 106.2 ft. to a point; thence N. 80 deg. 18' W.; 1610.8 ft. to a point at southeast corner of Cowan; thence with his south line N. 89 deg. 54' W.; 104.3 ft. to a point at the southeast corner of Prestige Estates Subdivision; thence with south line of said subdivision, Bullitt County Board of Education and Howard Etherton property N. 90 deg. 00' W.; 4013.6 ft. to a point on west side of Ky. Hwy. 61 (Preston Hwy.); thence with west line

LAW OFFICES
TAYLOR WALLER
& WOOLDRIDGE
DOCTORS ALLEY
P.O. BOX 125
SHEPHERDSVILLE
KENTUCKY 40363
PHONE 543-2246

of said highway N. 20 deg. 37' E.; 87.6 ft. to a point; thence N. 15 deg. 11' E.; 60.4 ft. to a point; thence N. 11 deg. 45' E.; 1222.4 ft. to a point in south line of Ky. Hwy. 1526 (Hebron Lane); thence east across Ky. Hwy. 61 (Preston Hwy.) S. 86 deg. 48' E.; 60.0 ft. to a point in east line of said highway; thence with east line of Ky. Hwy. 61 (Preston Hwy.) N. 15 deg. 17' E.; 197.0 ft. to a point; thence N. 19 deg. 19' E.; 199.5 ft. to a point; thence N. 23 deg. 03' E.; 753.6 ft. to a point; thence N. 22 deg. 24' E.; 383.3 ft. to a point; thence N. 16 deg. 53' E.; 337.5 ft. to the point of beginning.

2. Petitioners state that they constitute two-thirds (2/3rds) of the registered voters of the proposed city and/or owners of real property the sum total its assessed value is equal to at least two-thirds (2/3rds) of the assessed value of the real property in the proposed city.

3. The number of residents within the proposed city is

4. An accurate map of the proposed city is attached hereto as "Exhibit A".

5. The petitioners seek to incorporate the proposed city in order to provide certain services for the area through the medium of a city government. These services include street maintenance, street lighting, and garbage removal. Further, the petitioners desire to incorporate so that they may form their own governmental unit, instead of subjecting themselves to the risk of absorption by neighboring municipalities, and so that they may preserve the cohesive neighborhood character of their community.

6. At the present time the following facilities exist within the proposed city: (1) Hebron Cemetary; (2) Hebron Middle School; and (3) North Bullitt High School.

7. The following services currently exist within the proposed city: (1) Police protection as provided by the Bullitt County Police Department; (2) Fire protection as provided by the Zoneton Fire District; (3) Road maintenance on the streets within the proposed city are not maintained by the county as to the subdivisions and not a part of the county road system nor the state road system; (4) Garbage removal is available only through

private contractors; (5) Water is provided by Louisville Water Company; (6) Electricity is furnished by Louisville Gas and Electric Company; (7) Telephone service is furnished by Allied Telephone Company.

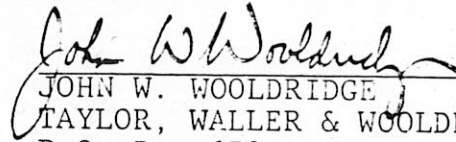
8. The petitioners intend that the city, if incorporated shall operate under the mayor counsel form of government.

9. The petitioners desire the appointment of the following persons, all residents of the proposed city, to hold the following offices, until the next regular election at which city officers may be elected, at which time officers shall be elected by residents of the city:

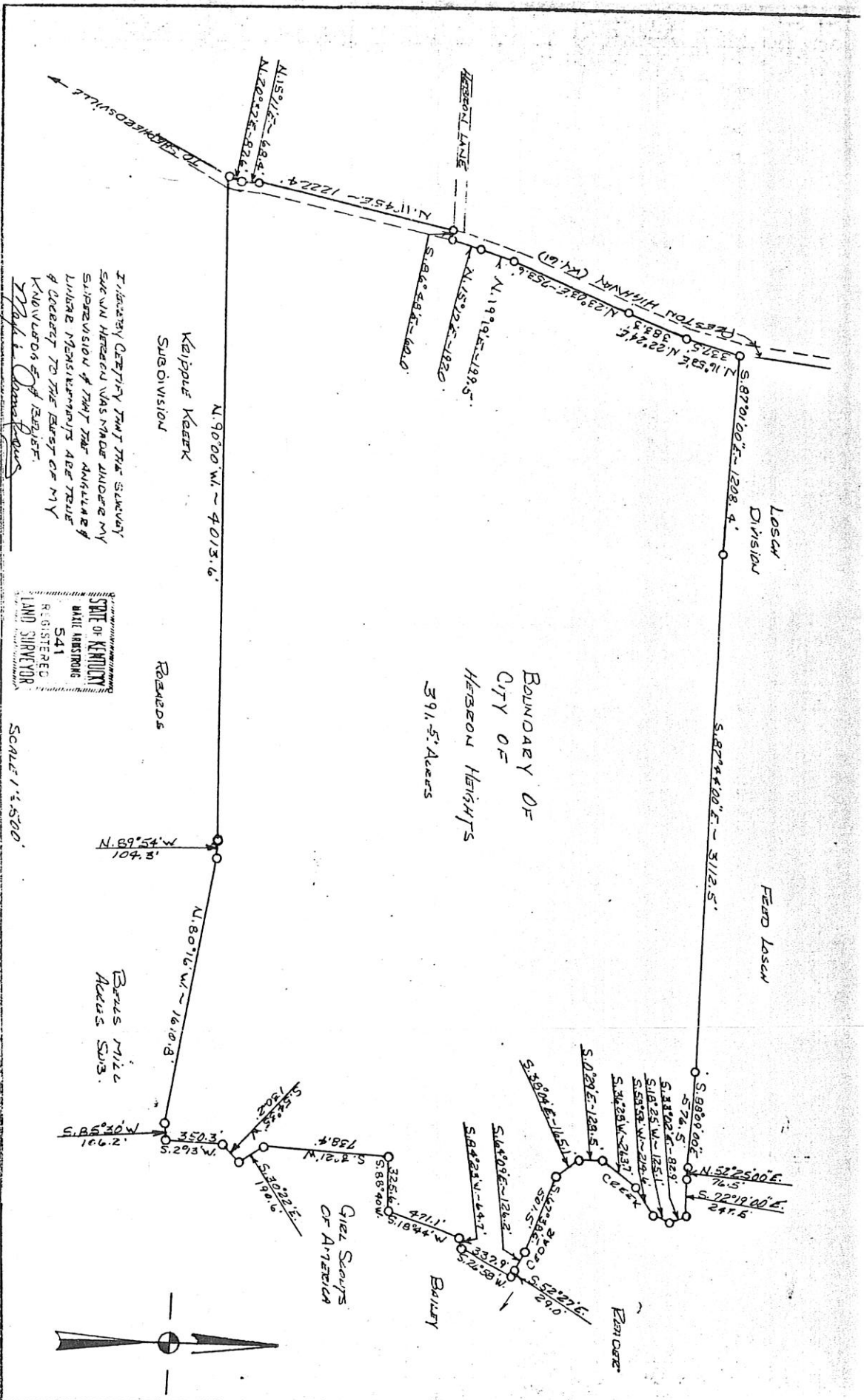
<u>NAME AND ADDRESS</u>	<u>OFFICE</u>
Gerald P. Burke 3320 Hebron Lane Shepherdsville, KY 40165	Mayor
Arnold Fraley 3635 Garden Court Shepherdsville, KY 40165	City Councilman
Jerry Watson 4913 Jerry Drive Shepherdsville, KY 40165	City Councilman
George Riedling 4916 Jerry Drive Shepherdsville, KY 40165	City Councilman
Bill Agee 3907 Scenic Trail Shepherdsville, KY 40165	City Councilman
Claude Devilbiss 4907 Jerry Drive Shepherdsville, KY 40165	City Councilman
Hershel Ricketts, Jr. 3321 Tony Lane Shepherdsville, KY 40165	City Councilman

Wherefore, the petitioners pray:

1. The City of Hebron Estates be established with the boundaries setforth herein.
2. That the Court assign the City to the _____ Class by reason of its population.
3. That the Court appoint the persons named herein to the offices referred to herein.
4. That the Court direct the Clerk of the Court to certify copy of the Judgment entered herein to the Secretary of State of the Commonwealth of Kentucky, not later than 10 days after the entry of such Judgment.



JOHN W. WOOLDRIDGE
TAYLOR, WALLER & WOOLDRIDGE
P.O. Box 670
202 Doctors Alley
Shepherdsville, KY 40165
Telephone: 955-6902 543-2312
ATTORNEY FOR PETITIONERS



I HEREBY CERTIFY THAT THIS SURVEY WAS MADE UNDER MY SUPERVISION AND THAT THE MEASUREMENTS AND CALCULATIONS ARE TRUE AND CORRECT TO THE BEST OF MY KNOWLEDGE AND BELIEF.

John J. O'Connell
 Surveyor

STATE OF KENTUCKY
 JOHN J. O'CONNOR
 PLATE NUMBER 541
 REGISTERED
 LAND SURVEYOR

SCALE 1" = 500'

